

Owl Class Curriculum Newsletter

Autumn 2023

'Movers and Shakers'



Welcome to the new school year in Owl Class. We have been very busy settling back into our class routines and welcoming new learners into class. As you will see, we have a very busy term planned.

The staff in Owl Class are:

D Taylor (Teacher: Mon-Thurs) Mrs K Ameson (HLTA: Fri)

Mrs Emily Corbett (TA) Mr George Langman (TA)

Mrs Bethan Fensome (TA p/t) Mrs Julia Rogers (TA p/t)

Mrs Jane Hunter (SNSW) Mr Dael Dael (SNSW)

Mrs Linda Cooper

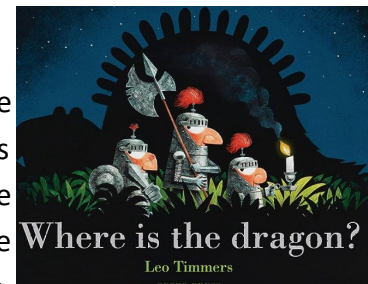
Please don't hesitate to contact us by email : Towls@old-park.dudley.sch.uk or using School Life.

Some Important Information:

- Please ensure your child's belongings are labelled with their name or initials. This includes bags, snack boxes, drink bottles, jumpers, coats and swimming kits.
- Our swimming day is Wednesday: please send in a labelled swimming kit, with a swimming pad (if pads are worn in school).
- Our P.E day is also Wednesday: Learners can come to school in their P.E. kit. (No uniform is necessary)
- Snack/Lunch: Please do your best to send in a healthy snack/lunch box (labelled) and please remember, we are a **nut free** school. If you send in a drinks bottle, they will be returned at the end of the day to be washed at home.

Multi-Sensory/Early English and English

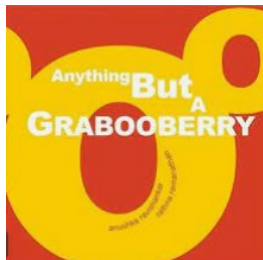
The reading genre this term is Myths and Legends. We are using the stories 'Where is the Dragon?' and 'Mythological Monsters'. Learners will be familiar with characters, settings and events having read the story using a story sack. This gives them the opportunity to experience objects, sounds, smells and also pictures/symbols/written words.



They will become familiar with and anticipate events in the stories with the support of a total communication approach.

Instruction Writing and Shape poetry

Learners will have the opportunity to express themselves in practical ways, combining music and movement as well as using pictures/symbols and words to create meaning. They will take part in fine and gross motor skill activities



that are repeated. Learners will work towards a set of identified skills using a range of resources. They will begin to use symbols/pictures/objects/mark making and writing to record their ideas and choices. Learners will read or follow instructions and demonstrate their own ideas in practical ways or by using symbols/words to write their



own instructions.

Multi-Sensory/Early Maths and Maths

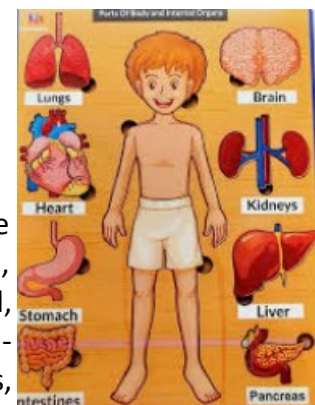


In the first half term we will be learning about early place value, number recognition and representing amounts. We will be demonstrating our learning in practical ways using everyday activities, songs and by beginning to record our own findings. Numicon number activities will be used. We will explore length and height using standard and non-standard units of measure.

In the second half term we will concentrate on the concepts of addition and subtraction, again using practical activities. We will also use money in real and play situations, learning to recognise currency and use coins to count out or match amounts.

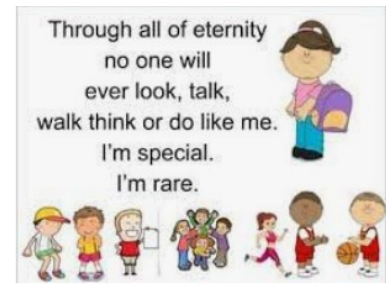
Multi-Sensory/Early Science and Science

This term our learning theme is 'My Body and How to Keep Healthy'. We will concentrate on the vocabulary: head, eyes, ears, mouth, nose, tummy/stomach, chest, clean, healthy, move, body, food, good, bad, sleep, danger, careful, safe, help. Our learning activities will involve learning about internal body parts, functions and names, grouping foods, making healthy lifestyle choices and safety.



Multi-Sensory/Early/PSHE

Our themes this term are 'Self Esteem and Unkind Comments' and 'Personal Strengths'. Learners will engage in activities that will explore the different ways they are special. They will identify feelings associated with feeling good about themselves. Respond to or describe activities and interests that they are good at and enjoy.



Discovery/History

We are learning about significant explorers, their journeys, how they travelled, what they wore and their adventures. The Arctic- Ernest Shackleton, The Americas: Christopher Columbus, Sir Francis Drake who circumnavigated the world and the exploration of Space - Neal Armstrong/Tim Peake. We are looking forward to exploring these journeys for ourselves through role play, sensory activities and craft.



Multi-Sensory/Early/Computing

We are partly focusing on operating switch devices for cooking and other activities. Using our English monster theme, learners will create their own digital artwork. We will also learn about the internet and its uses e.g. to communicate, shop, extract information. During the second half term we will explore pictograms and charts. Learners will collect their own data on a topic and transfer this onto a chart.

Creative/Art & Design/DT/Music

We will be creating geometric patterns and looking at the work of Gabby O'Connor. Learners will choose materials to design and make a photo frame. In Music we will continue to follow the Cheranga Music Schemes. We will identify, choose and play instruments and explore producing different sounds, beats, stop and play, solo and group performances.

Physical Development/P.E.

In P.E we will follow a structured sing dance play routine, learning the actions and dance moves for action party songs – (superman, cha cha slide etc).

We will use a selection of session songs in certain order each week to build on repetition of movement and learning of basic routines and movements. Some learners will begin to combine actions and movements to make dances, alone, and with a group based on themes to do with 'our world'.